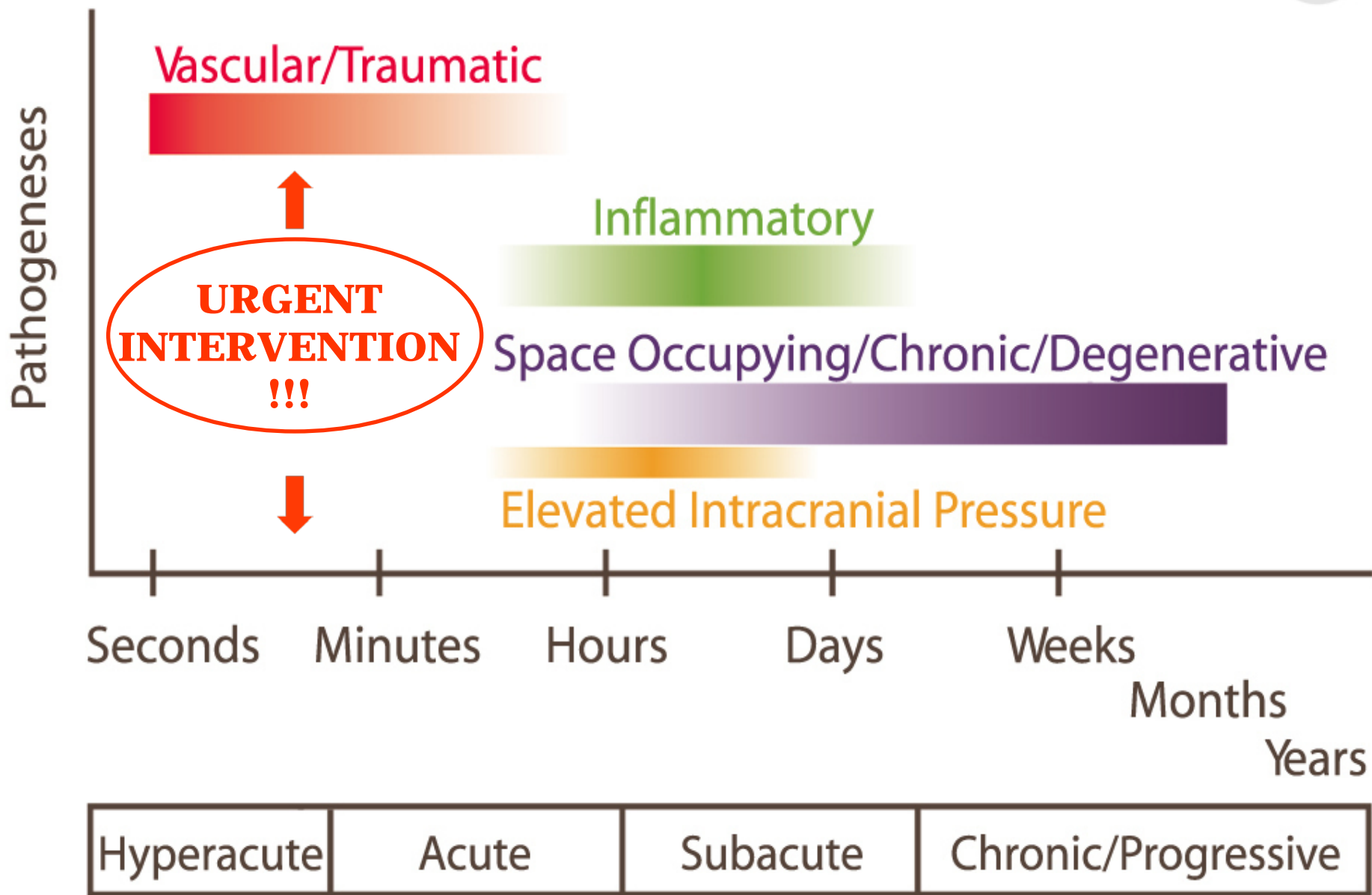
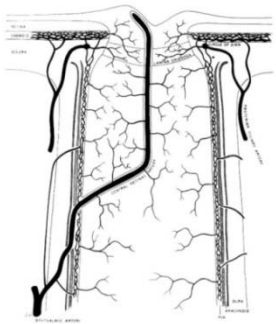
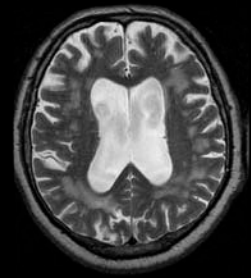


Onset of vision loss





NA AION systemic treatment



ETIOLOGY - THROMBO-EMBOLISM

cholesterol embolism

- *ICA atherosclerosis*
- *atherogenic plaque rupture of soft plaque*

fibrin embolism

- *cardiac (AF, valve insufficiency)*

increased platelets aggregation

- *thrombophylia*

the fellow eye may also be affected

- *pseudoFoster–Kennedy syndrome*

prevention

- *amaurosis*
- *repairing of microcirculation*
- *thromboembolism*

SYSTEMIC TREATMENT - RECOMMENDATION

Thrombocyte aggregation inhibitor treatment

Anticoagulant therapy

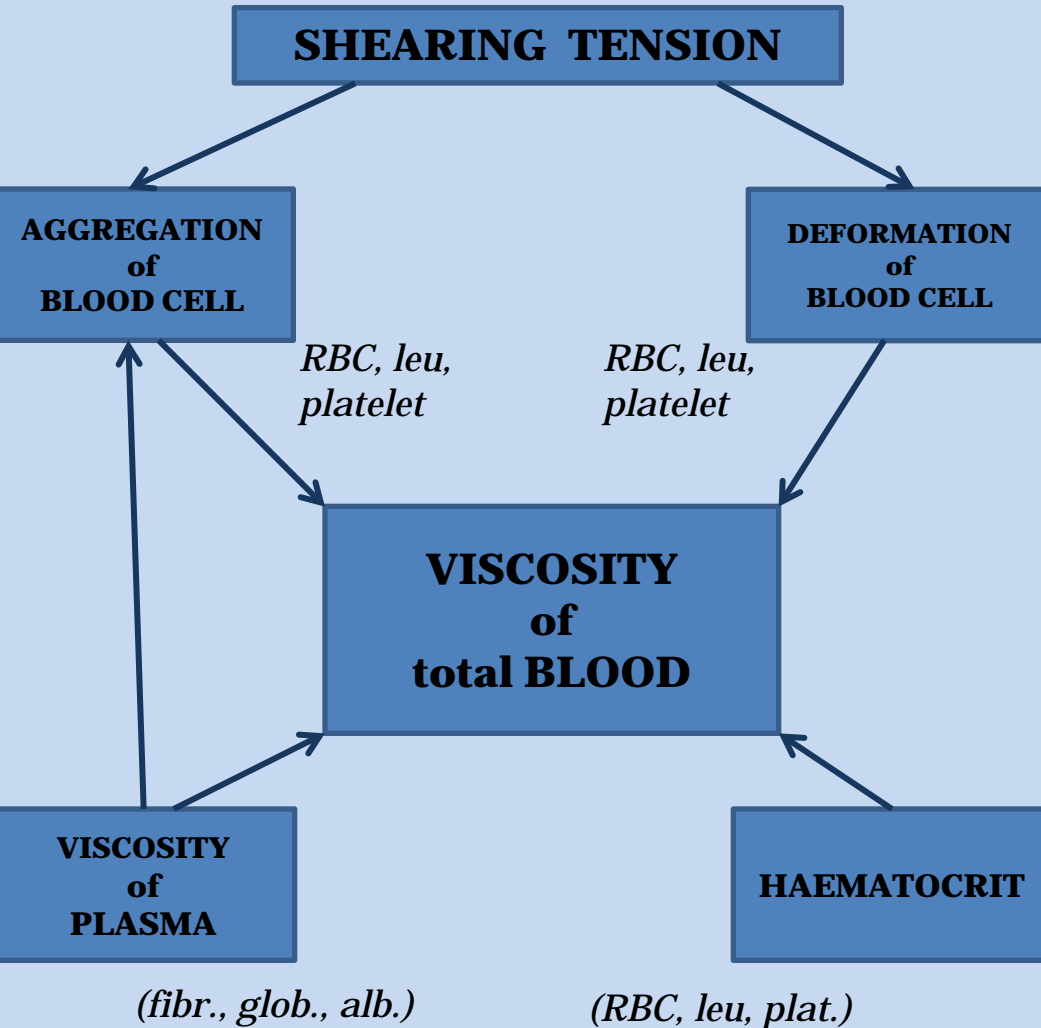
COMPLEMENTARY therapy

- *glucose-, lipid metabolism disorders-*
- *hypertension-*

HAEMODILUTION

- *neuroprotection-*
- *vasodilatation therapy*

Complex therapy: Hemodilution + Anti-aggregation



HEMODILUTION

Efficient

- restoring normal blood volume
- resulting in normovolemia
- improvement of microcirculation of Zinn Haller network

Non-efficient (by itself)

in case of microembolisations of end-arterias

Suggestion

1. antithrombotic basic therapy combined with hemodilution
2. complementary treatments risk factors, background diseases